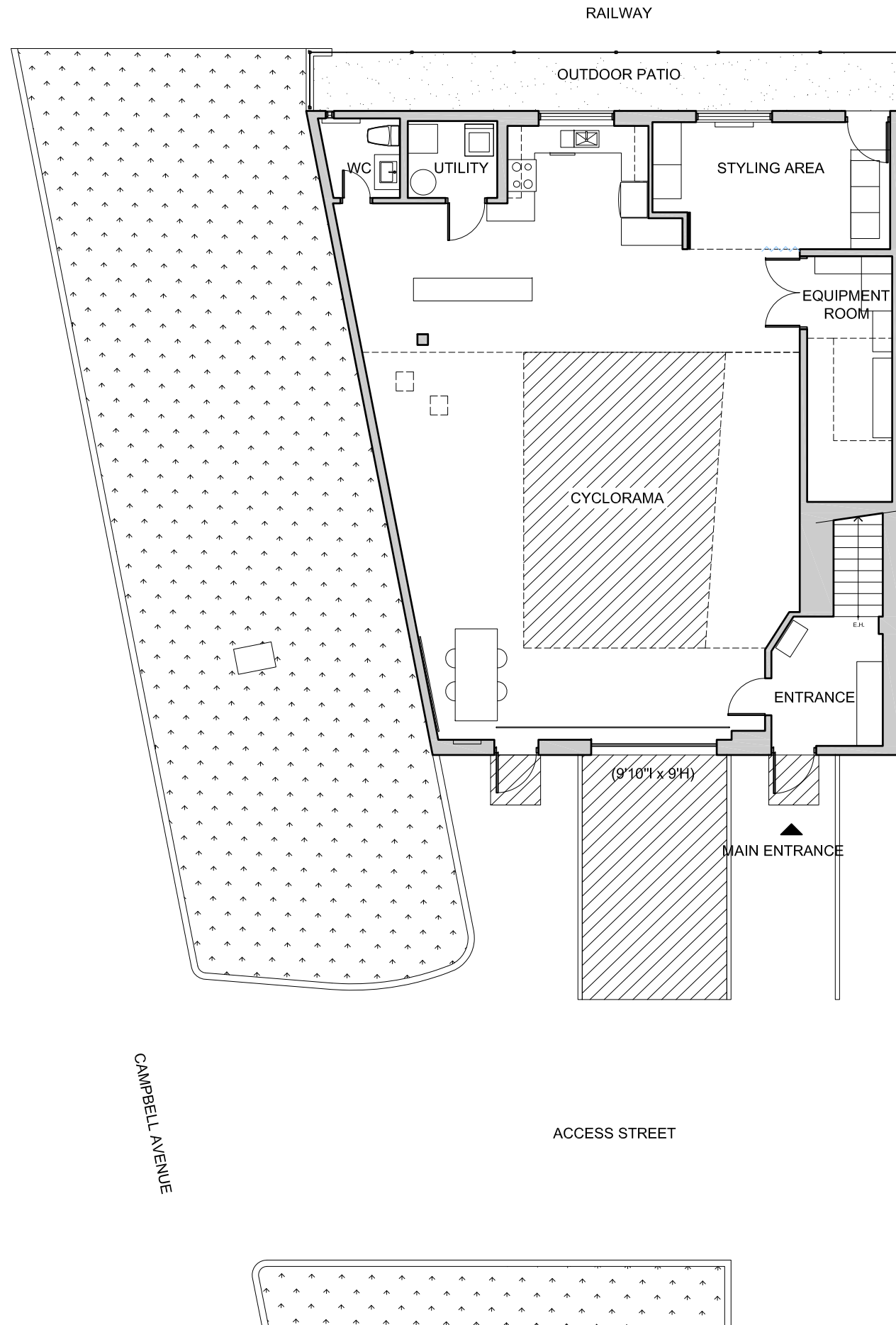
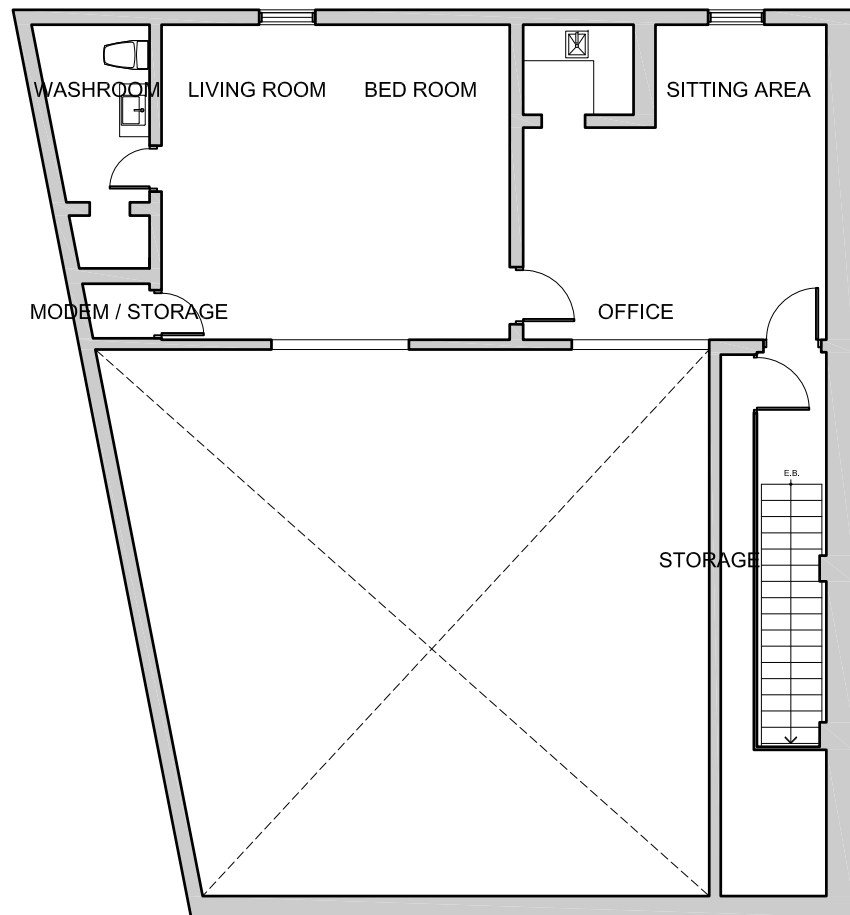




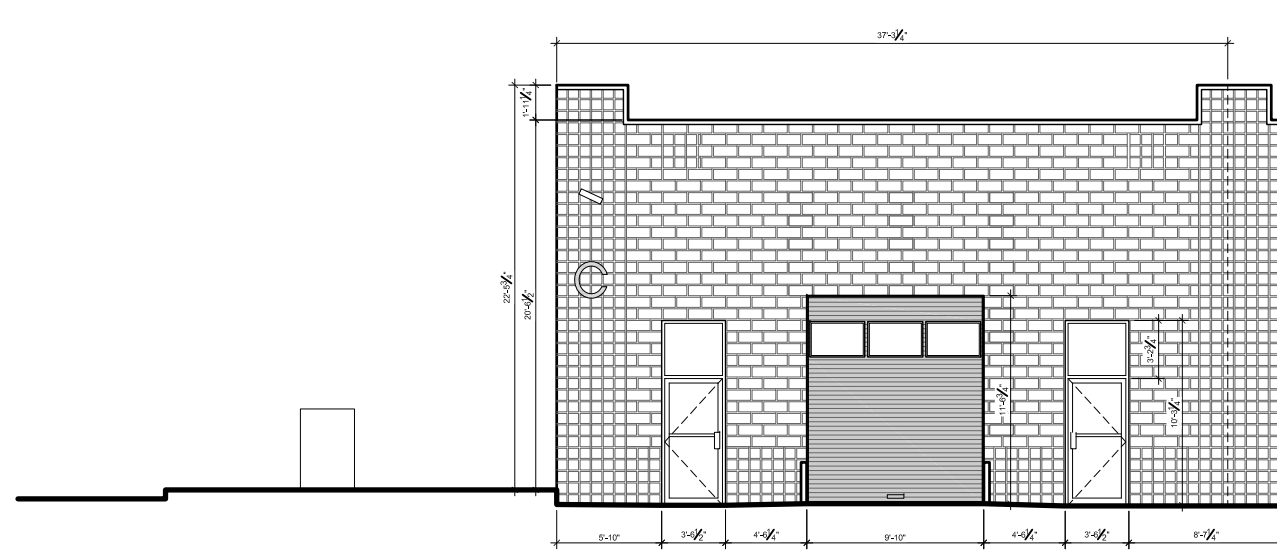
services

- high speed wireless internet access
- telephone and fax
- fully equiped kitchens (gas stoves, dishwashers, fridges, espresso coffee marchines, water dispensers, toasters, microwaves)
- washer and dryer machines
- shower
- changing rooms
- stockroom
- photo, lighting and grip equipment rental
- props rental
- loading dock
- alarm system
- air conditioning
- wireless stereo systems
- garage door: 9'10" w x 9' h

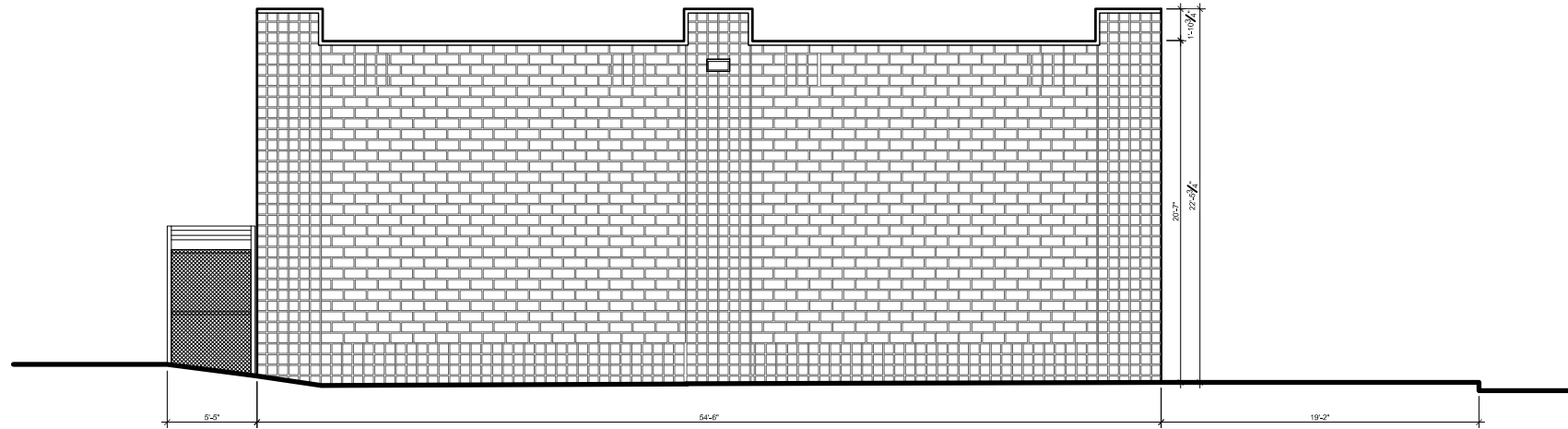




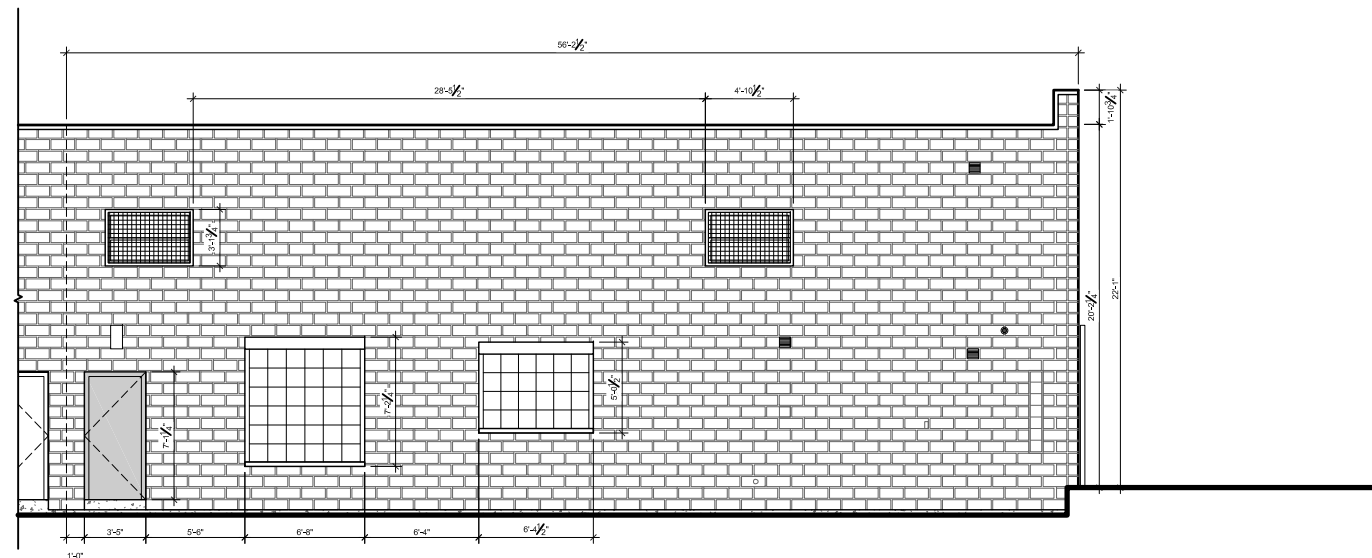
SOUTH ELEVATION
FACADE OVERLOOKING THE ACCESS STREET



WEST ELEVATION
FACADE OVERLOOKING CAMPBELL AVENUE



NORTH ELEVATION
FACADE OVERLOOKING THE RAILWAY





studio

total surface area of 2400 sf.
dimensions: 44'10"w x 49'7"d x 20'2"h to steel ceiling / 18'3"h to beams / 11'9"h to light
cyclorama: 1 wall, 24'w x 25'd x 13'10"h to steel ceiling / 17'11"h to lighting grid
power: 200 amp. 3 phases E series distributed by camlock services
south facing glass door
blackout capable
drive-in accessible
garage door: 9'10"w x 9'h

rates

photo – commercial, ½ day: \$600
photo – commercial, 1 day: \$800
photo – editorial, ½ day: \$400
photo – editorial, 1 day: \$600
video – ½ day: \$750
video – 1 day: \$1000

notes

half-day: 4-hour block (8am to noon or 1pm to 5pm)
full-day: 10-hour block (8am to 6pm)
overtime: \$100/hour
white base coating of the cyclorama's floor (1 coat): \$100

- POWER: XX AMP. + CAMLOCK 200 AMP.
- 15 amp.
- 15 amp. / 5' from the ground
- 20 amp.
- 20 amp. split
- 20 amp. / 5' from the ground
- 200 amp. / 3 phases E series

