



### studio

**total surface area of 2400 sf.**  
**dimensions:** 44'10"w x 49'7"d x 20'2"h to steel ceiling / 18'3"h to beams / 11'9"h to light  
**cyclorama:** 1 wall, 24'w x 25'd x 13'10"h to steel ceiling / 17'11"h to lighting grid  
**power:** 200 amp. 3 phases E series distributed by camlock services  
**south facing glass door**  
**blackout capable**  
**drive-in accessible**  
**garage door:** 9'10"w x 9'h

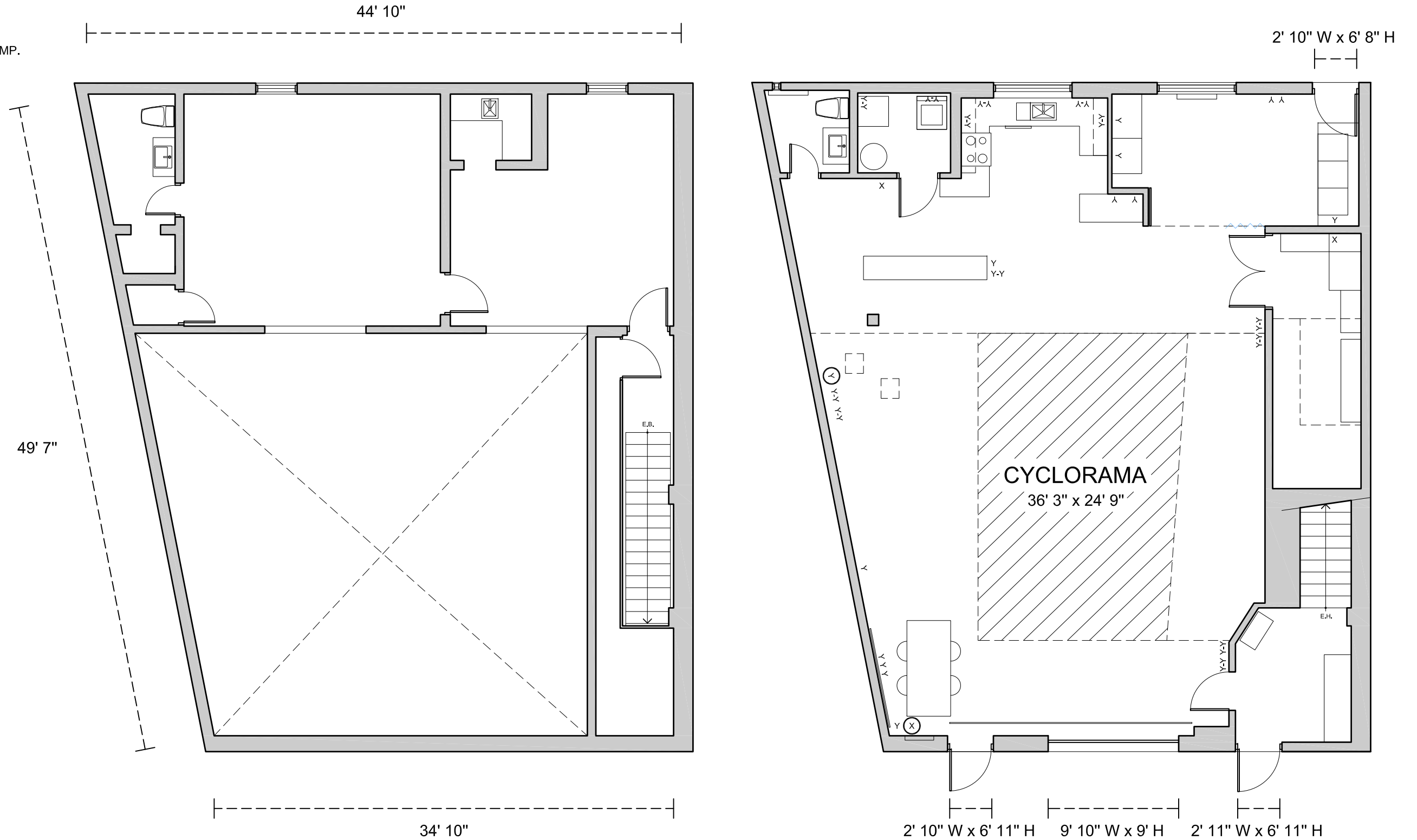
### rates

**photo – commercial, ½ day: \$600**  
**photo – commercial, 1 day: \$800**  
**photo – editorial, ½ day: \$400**  
**photo – editorial, 1 day: \$600**  
**video – ½ day: \$750**  
**video – 1 day: \$1000**

### notes

**half-day: 4-hour block (8am to noon or 1pm to 5pm)**  
**full-day: 10-hour block (8am to 6pm)**  
**overtime: \$100/hour**  
**white base coating of the cyclorama's floor (1 coat): \$100**

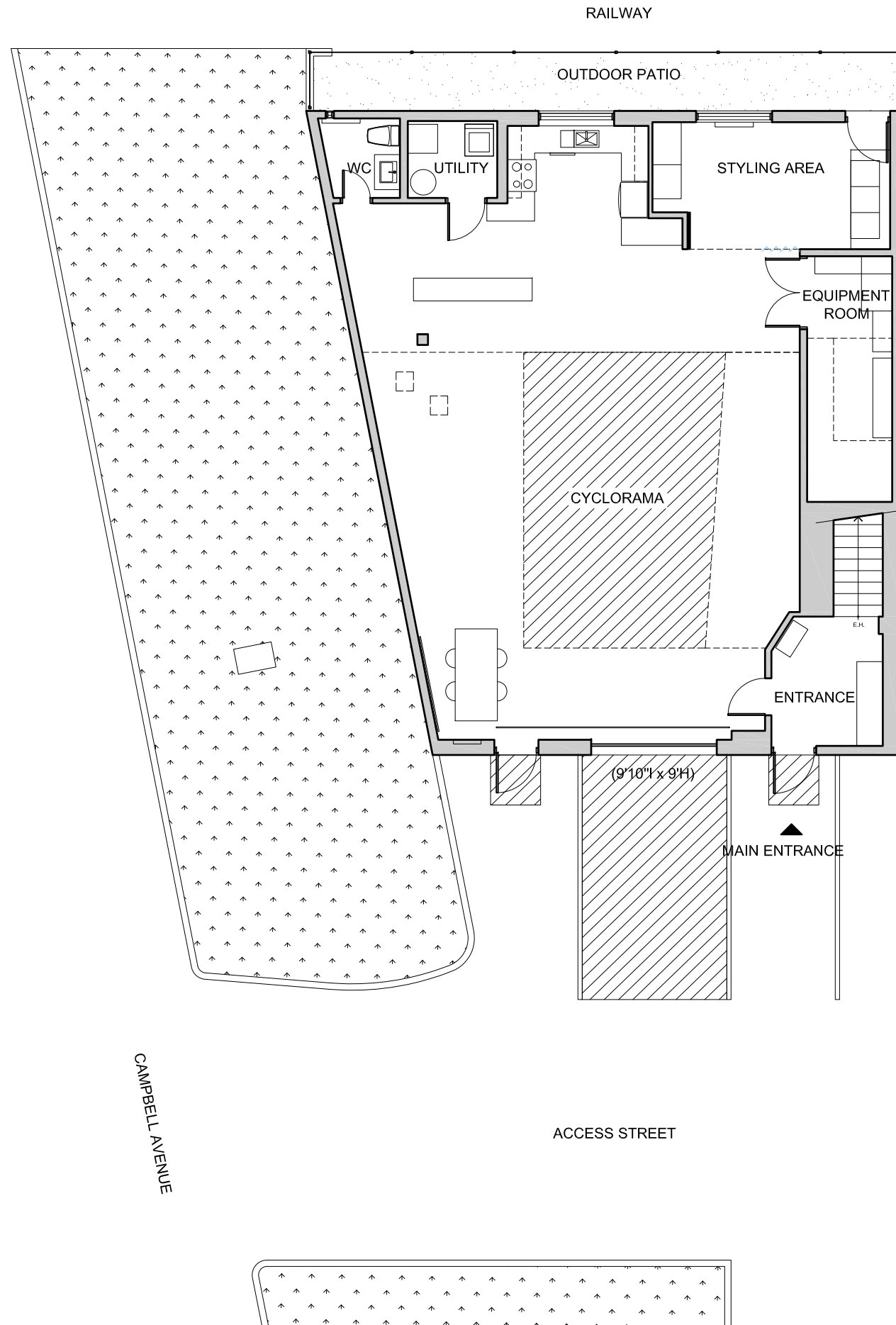
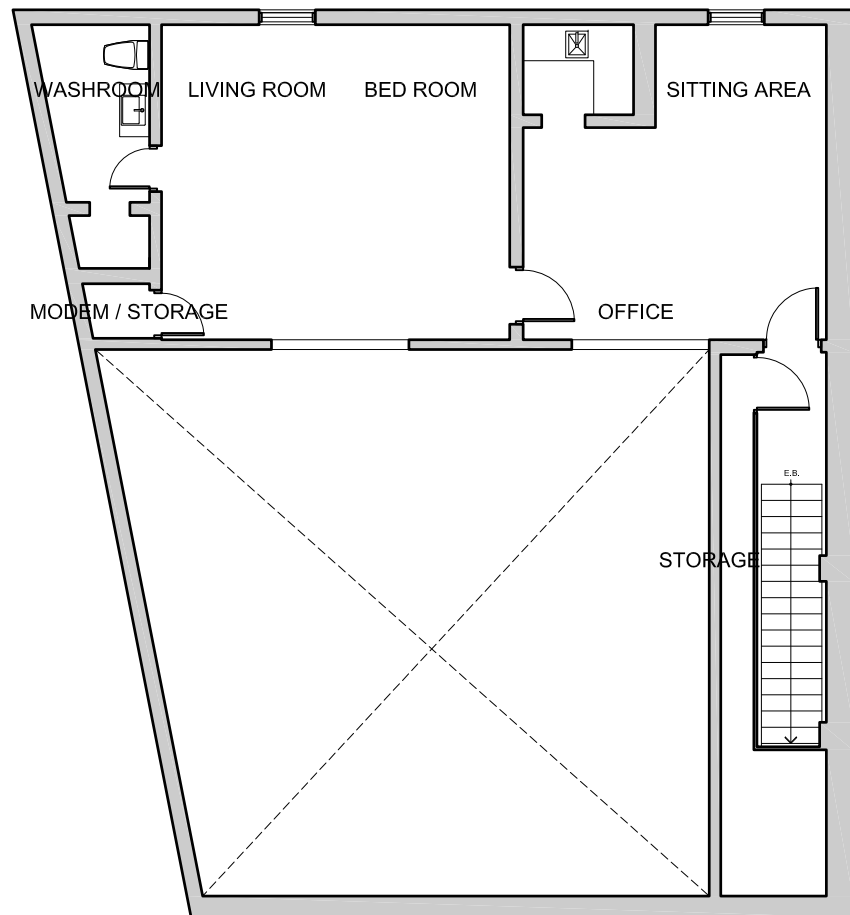
- ⚠ POWER: XX AMP. + CAMLOCK 200 AMP.
- x 15 amp.
- ⊗ 15 amp. / 5' from the ground
- y 20 amp.
- y-y 20 amp. split
- ⊙ 20 amp. / 5' from the ground
- CAM 200 amp. / 3 phases E series





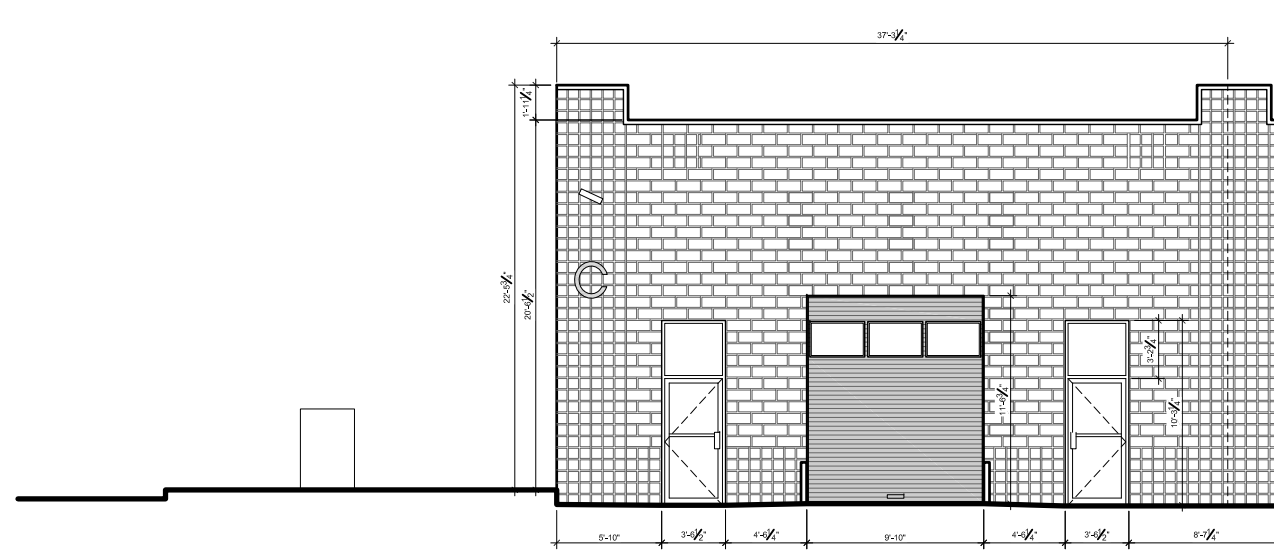
### services

- high speed wireless internet access
- telephone and fax
- fully equiped kitchens (gas stoves, dishwashers, fridges, espresso coffee marchines, water dispensers, toasters, microwaves)
- washer and dryer machines
- shower
- changing rooms
- stockroom
- photo, lighting and grip equipment rental
- props rental
- loading dock
- alarm system
- air conditioning
- wireless stereo systems
- garage door: 9'10" w x 9' h

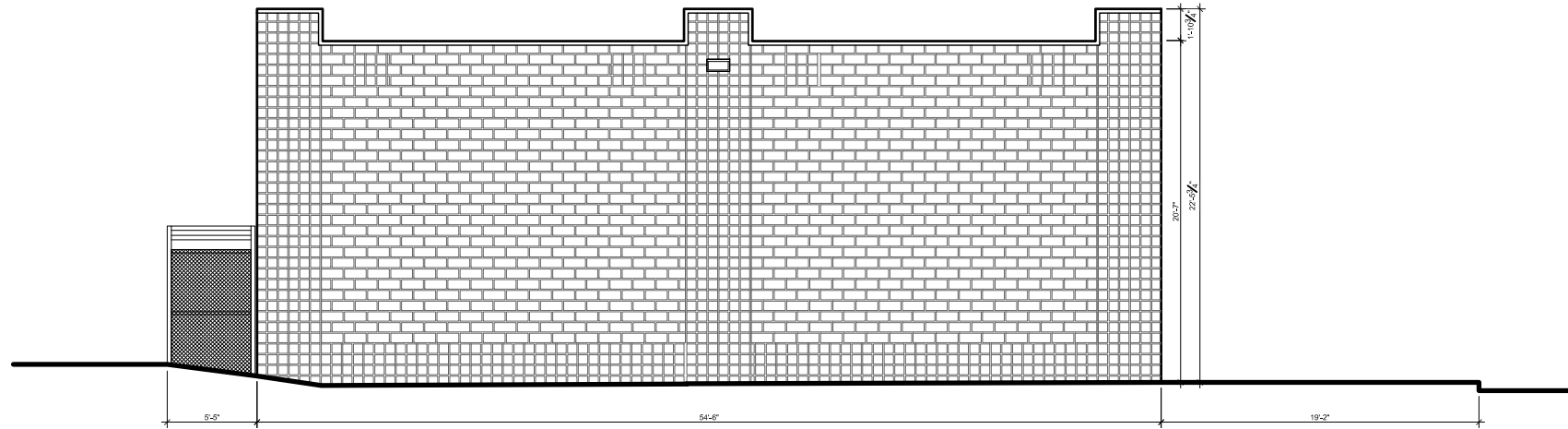




**SOUTH ELEVATION**  
FACADE OVERLOOKING THE ACCESS STREET



**WEST ELEVATION**  
FACADE OVERLOOKING CAMPBELL AVENUE



**NORTH ELEVATION**  
FACADE OVERLOOKING THE RAILWAY

