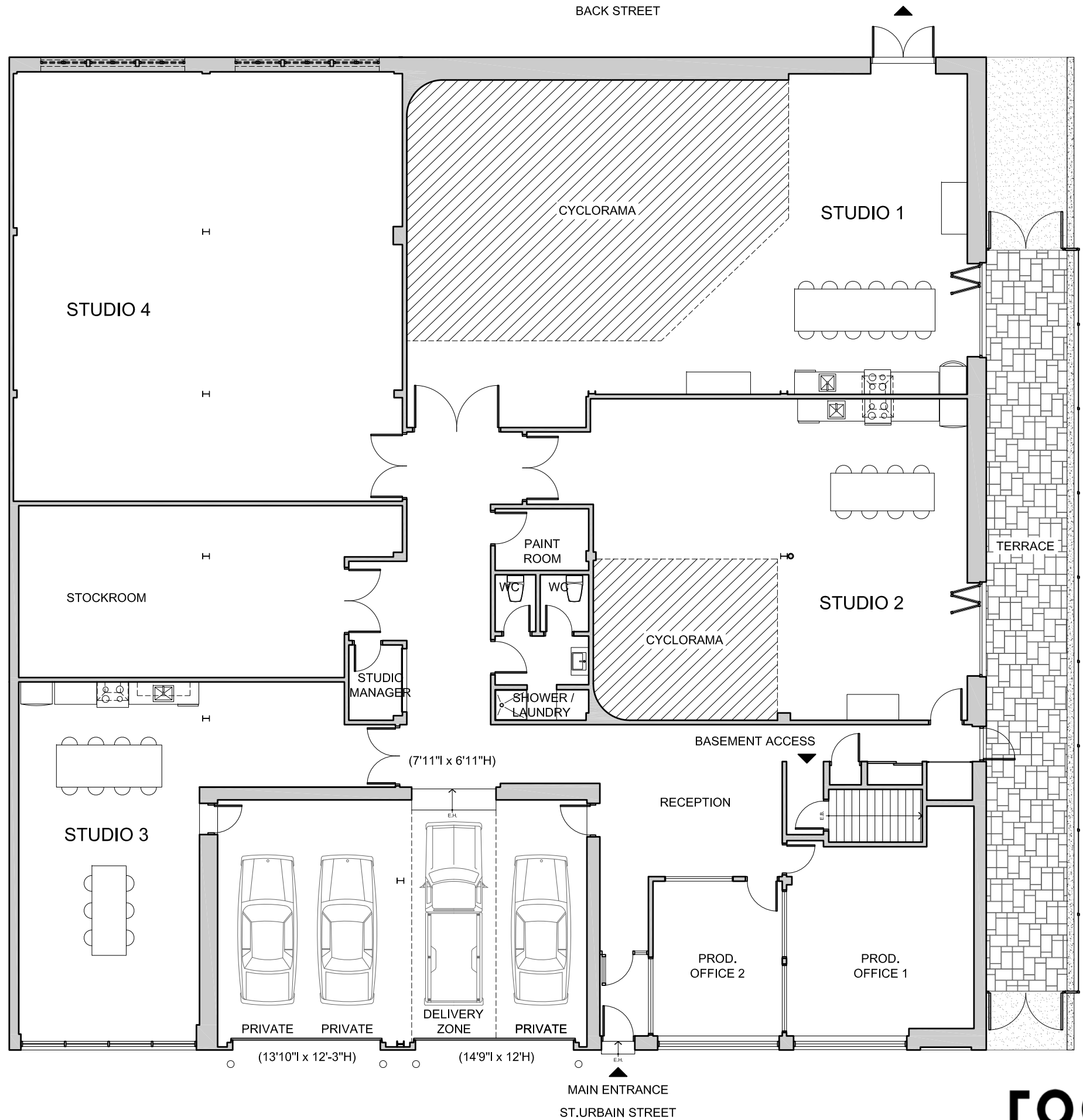
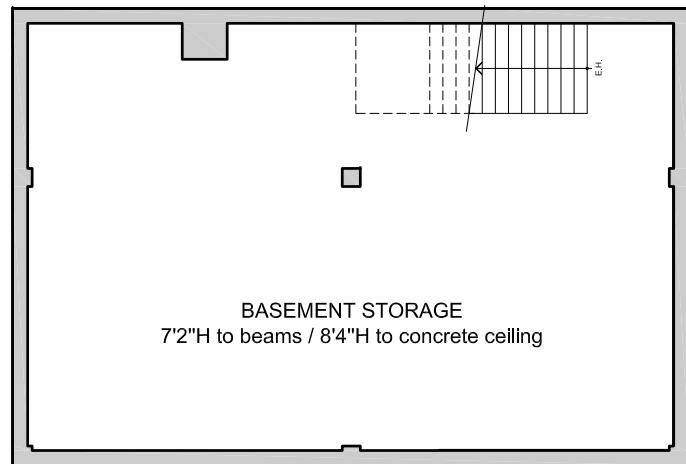




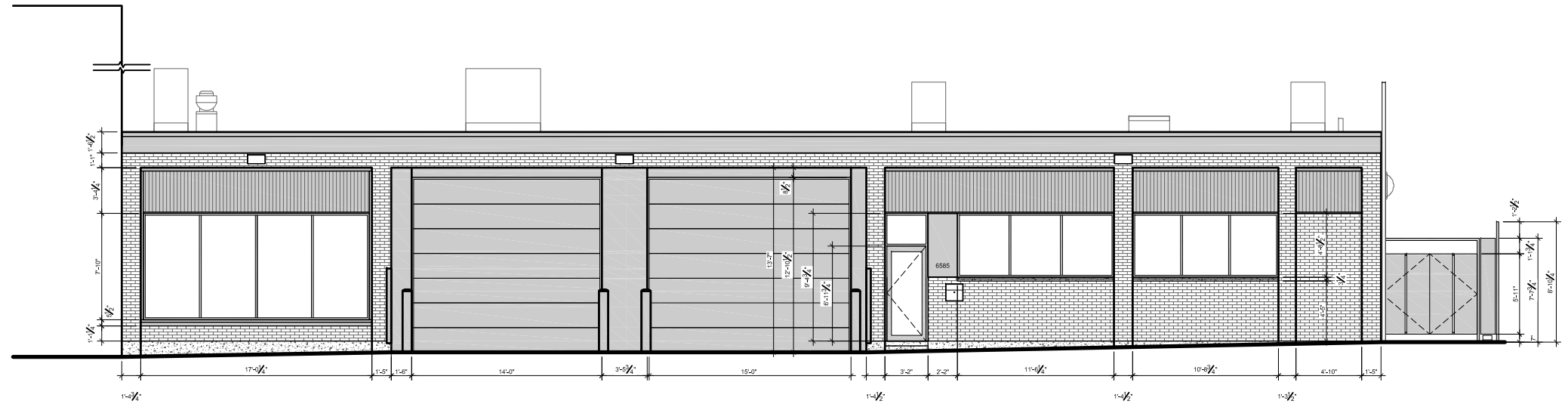
services

- high speed wireless internet access
- telephone and fax
- fully equiped kitchens (gas stoves, dishwashers, fridges, espresso coffee marchines, water dispensers, toasters, microwaves)
- washer and dryer machines
- shower
- changing rooms
- stockroom
- photo, lighting and grip equipment rental
- props rental
- loading dock
- alarm system
- air conditioning
- wireless stereo systems
- garage doors: 14'9"w x 12'h (ext.) / 7'11"w x 6'11"h (int.)

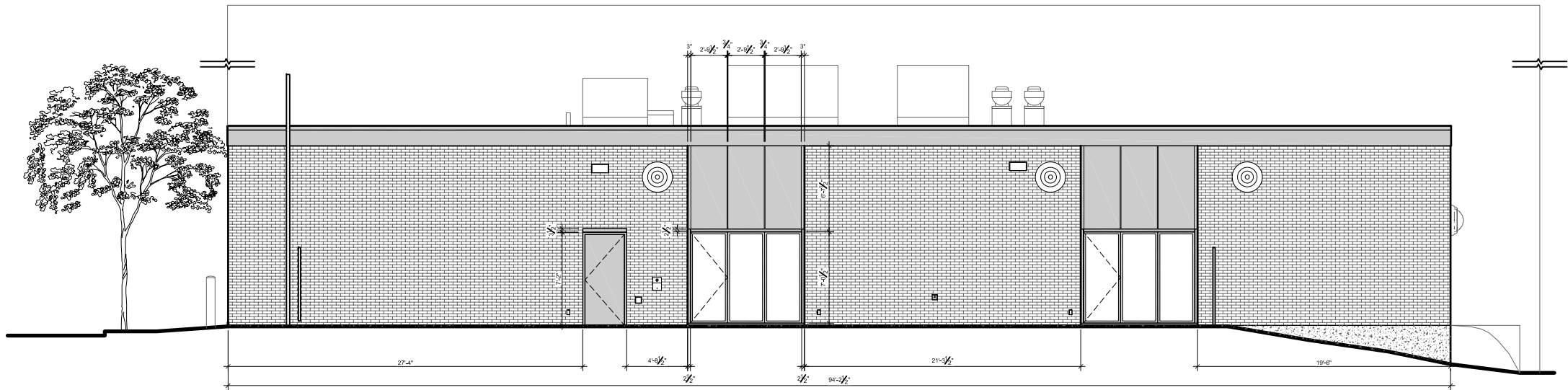




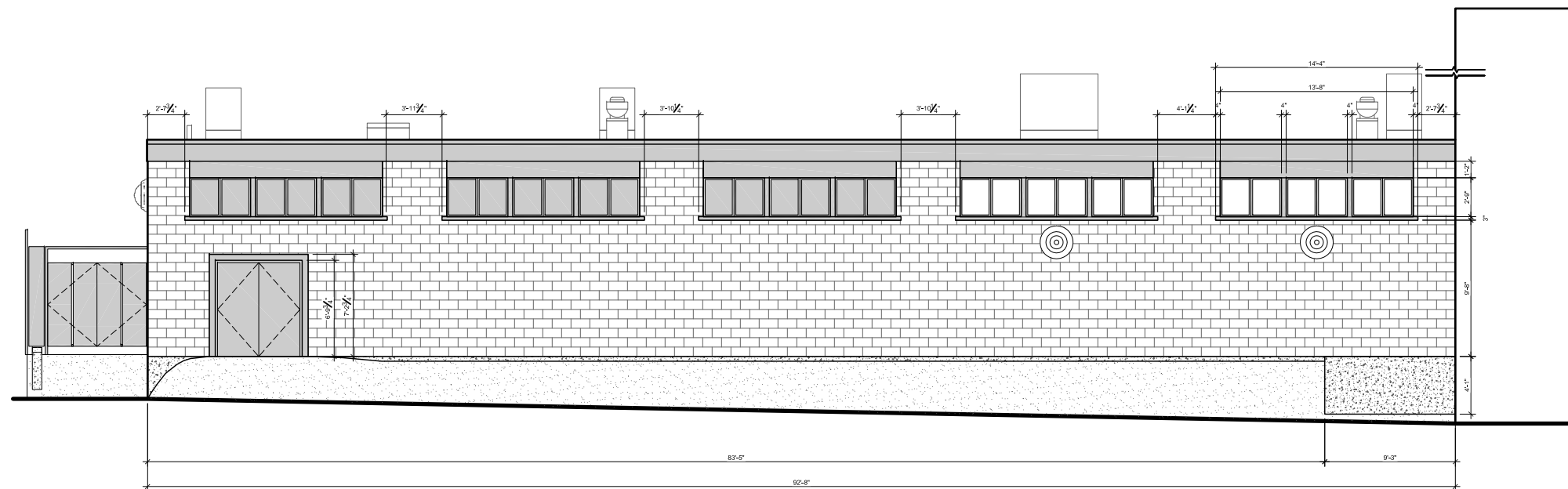
WEST ELEVATION
FACADE OVERLOOKING ST-URBAIN STREET



SOUTH ELEVATION
FACADE OVERLOOKING THE TERRACE



EAST ELEVATION
FACADE OVERLOOKING THE BACK STREET





studio 1

total surface area of 1647 sf.
 dimensions: 53'2"w x 33'7"d x 13'10"h to wood ceiling / 11'4"h to beams / 11'1"h to ventilation duct
 cyclorama: 2 walls, 1 corner, 36'3"w x 24'9"d x 13'10"h to wood ceiling / 12'4"h to lighting grid
 power: 100 amp. 3 phases distributed by camlock services
 east facing french windows
 blackout capable
 drive-in accessible
 garage doors: 14'9"w x 12'h (ext.) / 7'11"w x 6'11"h (int.)

rates

photo – commercial, ½ day: \$400
 photo – commercial, 1 day: \$600
 photo – casting, ½ day: \$300
 photo – editorial, ½ day: \$300
 photo – editorial, 1 day: \$400
 video – 1 day: \$750

notes

half-day: 4-hour block (8am to noon or 1pm to 5pm)
 full-day: 10-hour block (8am to 6pm)
 overtime photo: \$75/hour
 overtime video: \$100/hour
 white base coating of the cyclorama's floor (1 coat): \$100

- ⚠ POWER: 300 AMP. + CAMLOCK 300 AMP.
- x 15 amp.
- ⊗ 15 amp. / 12' from the ground
- y 20 amp.
- ⊙ 20 amp. / 12' from the ground
- z 30 amp. / 220 v
- CAM 100 amp. / 3 phases

