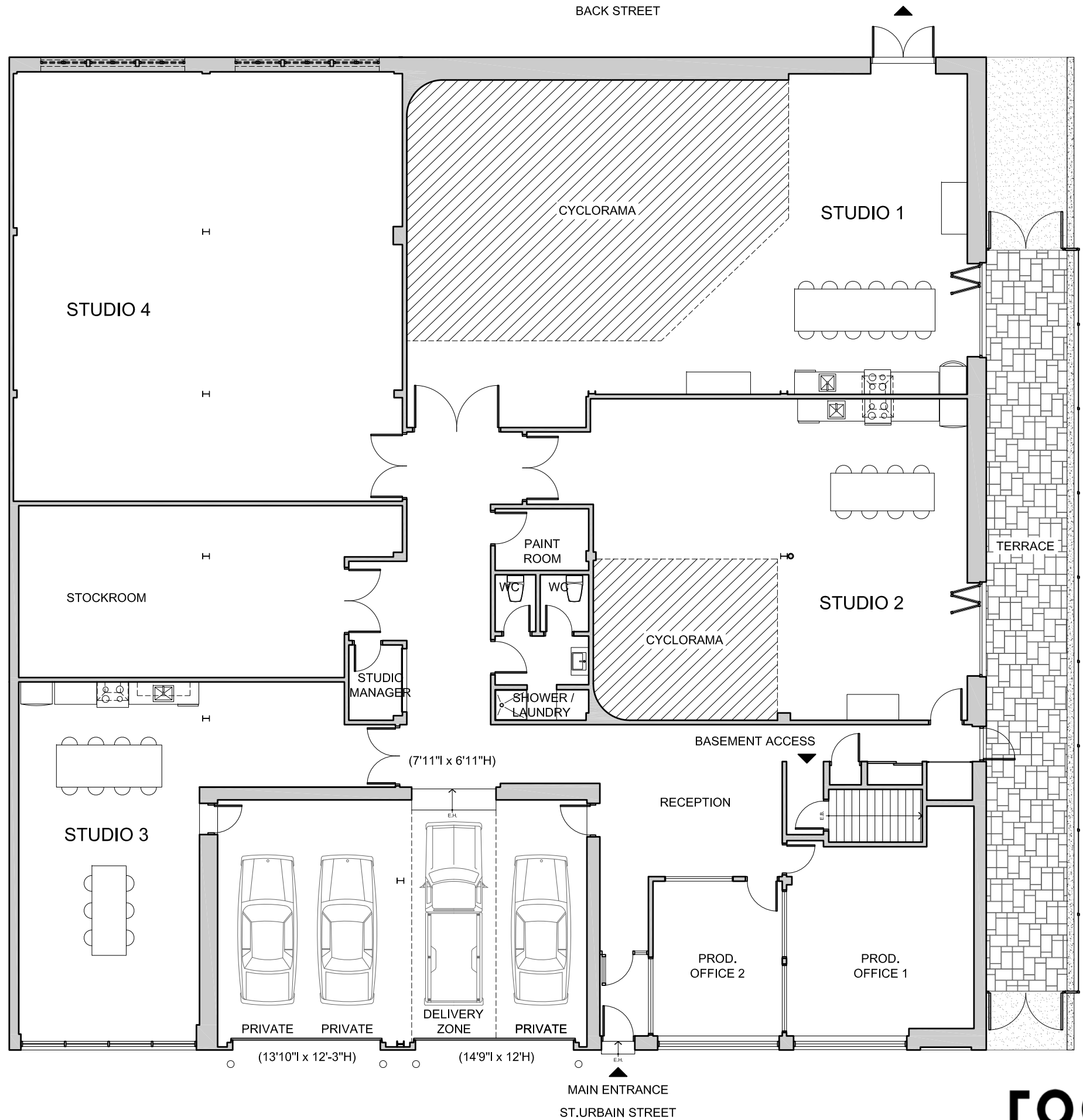
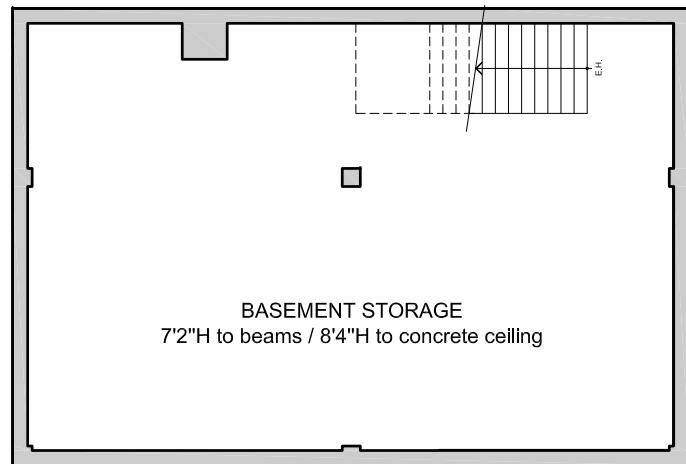




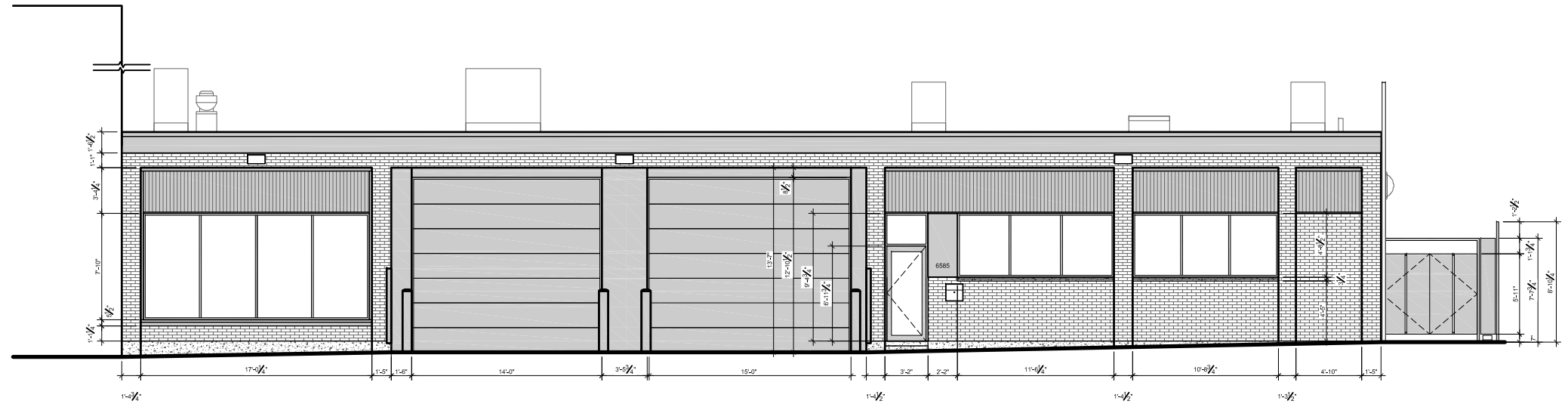
### services

- high speed wireless internet access
- telephone and fax
- fully equiped kitchens (gas stoves, dishwashers, fridges, espresso coffee machines, water dispensers, toasters, microwaves)
- washer and dryer machines
- shower
- changing rooms
- stockroom
- photo, lighting and grip equipment rental
- props rental
- loading dock
- alarm system
- air conditioning
- wireless stereo systems
- garage doors: 14'9"w x 12'h (ext.) / 7'11"w x 6'11"h (int.)

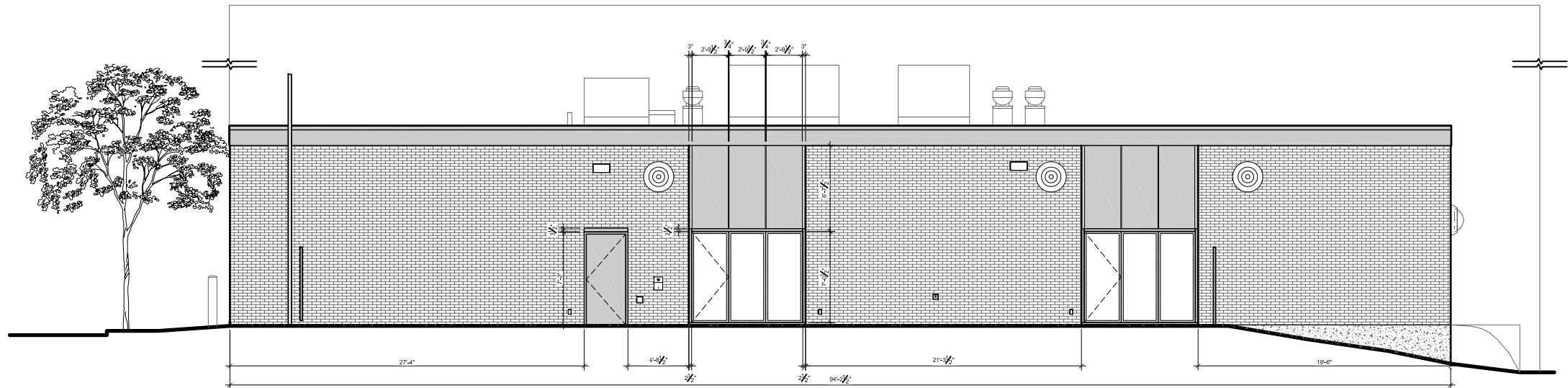




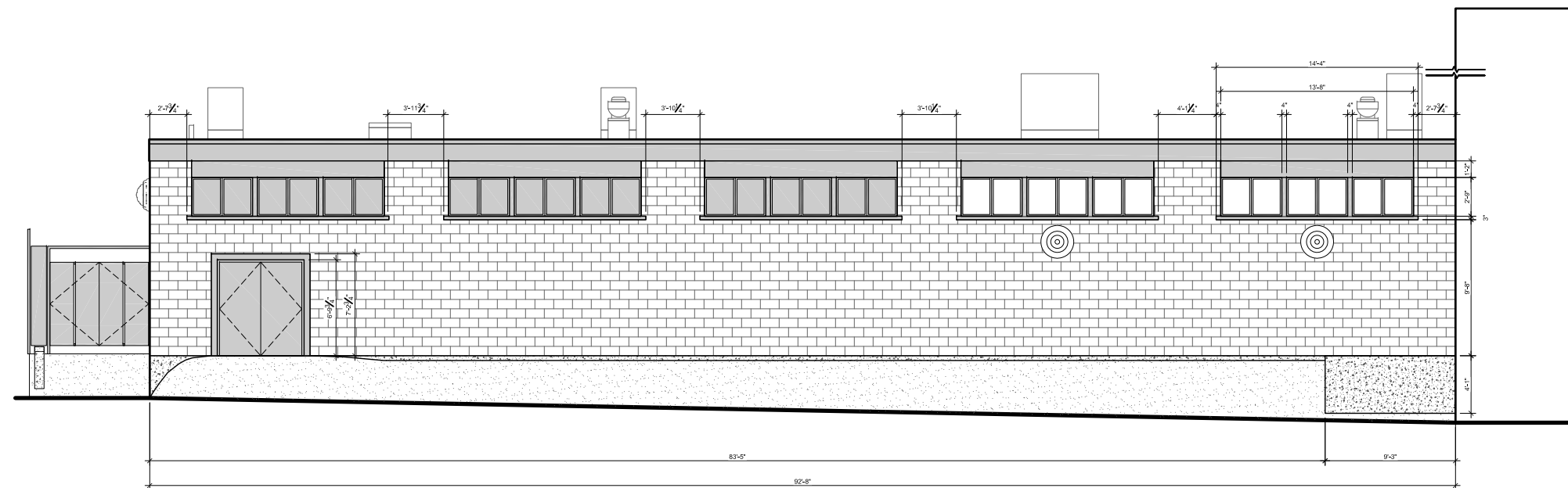
**WEST ELEVATION**  
FACADE OVERLOOKING ST-URBAIN STREET



**SOUTH ELEVATION**  
FACADE OVERLOOKING THE TERRACE



**EAST ELEVATION**  
FACADE OVERLOOKING THE BACK STREET





## studio 2

total surface area of 1123 sf.

dimensions: 30'6"w x 35'9"d x 13'10"h to wood ceiling / 12'6"h to beams / 11'8"h to ventilation duct / 10'8"h to ventilation duct lower point

cyclorama: 2 walls, 1 corner, 17'6"w x 15'4"d x 13'10"h to wood ceiling / 12'5"h to lighting grid

power: 100 amp. 3 phases distributed by camlock services

east facing french windows

blackout capable

garage doors: 14'9"w x 12'h (ext.) / 7'11"w x 6'11"h (int.)

## rates

photo – commercial ½ day: \$350

photo – commercial 1 day: \$500

photo – casting ½ day: \$300

photo – editorial ½ day: \$300

photo – editorial 1 day: \$400

video – 1 day: \$650

## notes

half-day: 4-hour block (8am to noon or 1pm to 5pm)

full-day: 10-hour block (8am to 6pm)

overtime photo: \$75/hour

overtime video: \$100/hour

white base coating of the cyclorama's floor (1 coat): \$50



⚠ POWER: 300 AMP. + CAMLOCK 300 AMP.

x 15 amp.

⊗ 15 amp. / 12' from the ground

⊙ 15 amp. / ceiling

y 20 amp.

⊖ 20 amp. / 12' from the ground

z 30 amp. / 220 v

CAM 100 amp. / 3 phases

