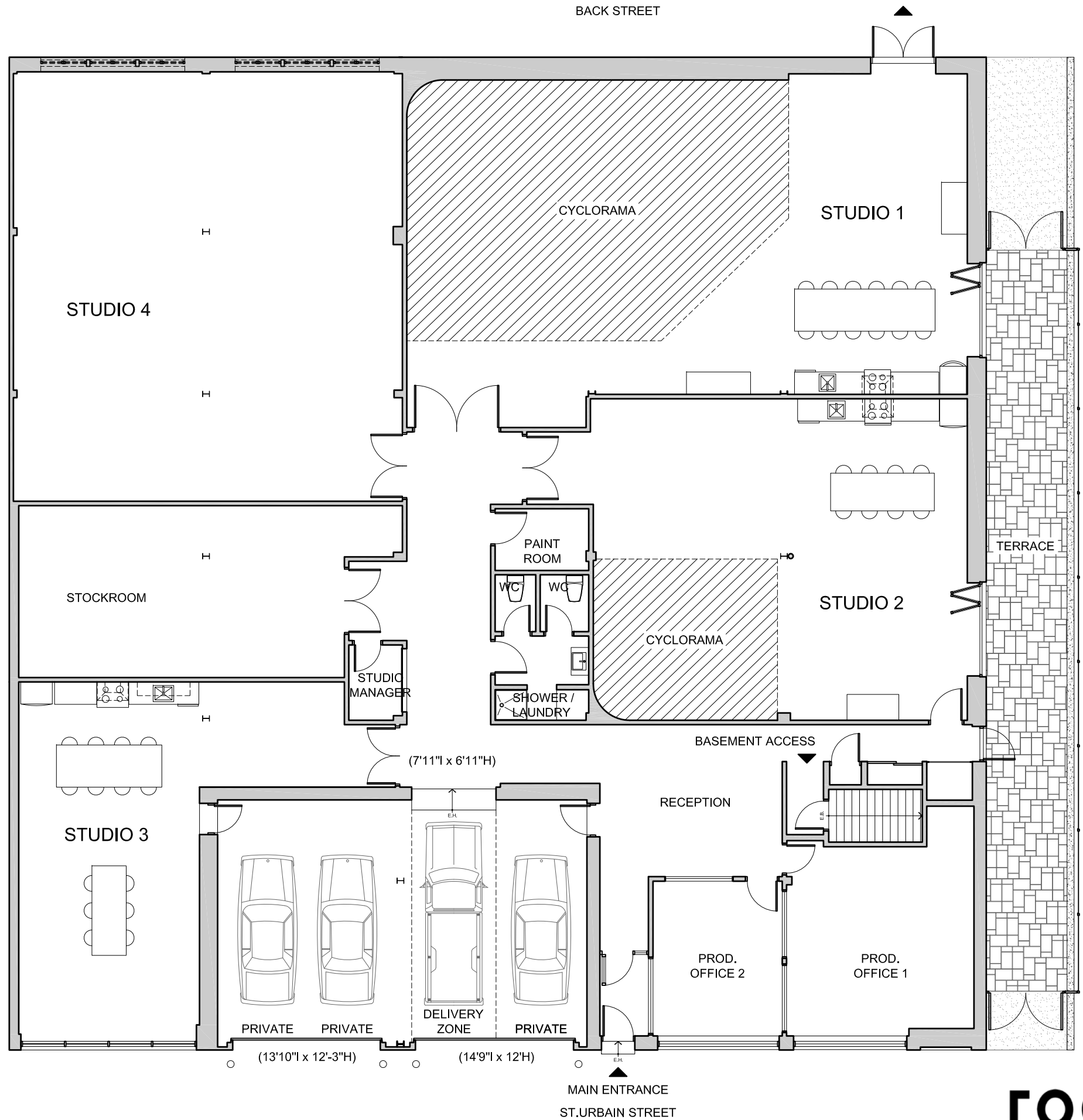
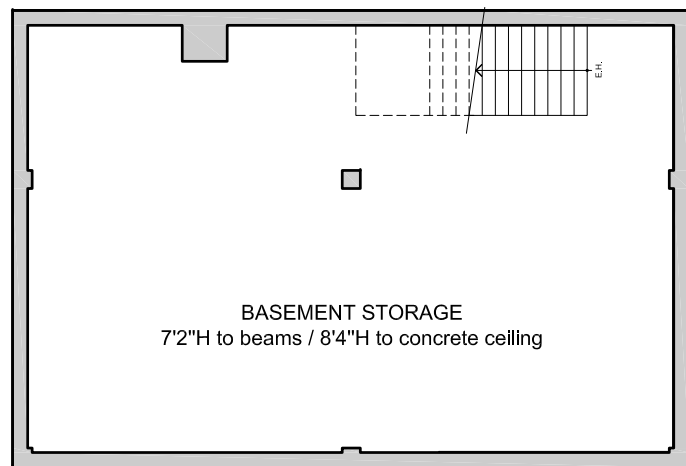




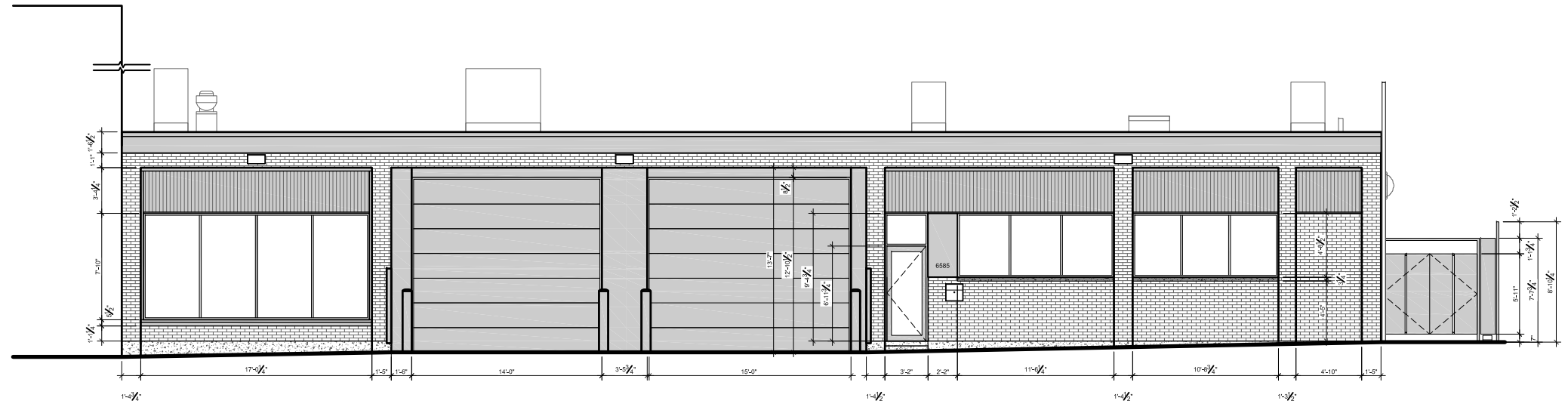
services

- high speed wireless internet access
- telephone and fax
- fully equiped kitchens (gas stoves, dishwashers, fridges, espresso coffee marchines, water dispensers, toasters, microwaves)
- washer and dryer machines
- shower
- changing rooms
- stockroom
- photo, lighting and grip equipment rental
- props rental
- loading dock
- alarm system
- air conditioning
- wireless stereo systems
- garage doors: 14'9"w x 12'h (ext.) / 7'11"w x 6'11"h (int.)

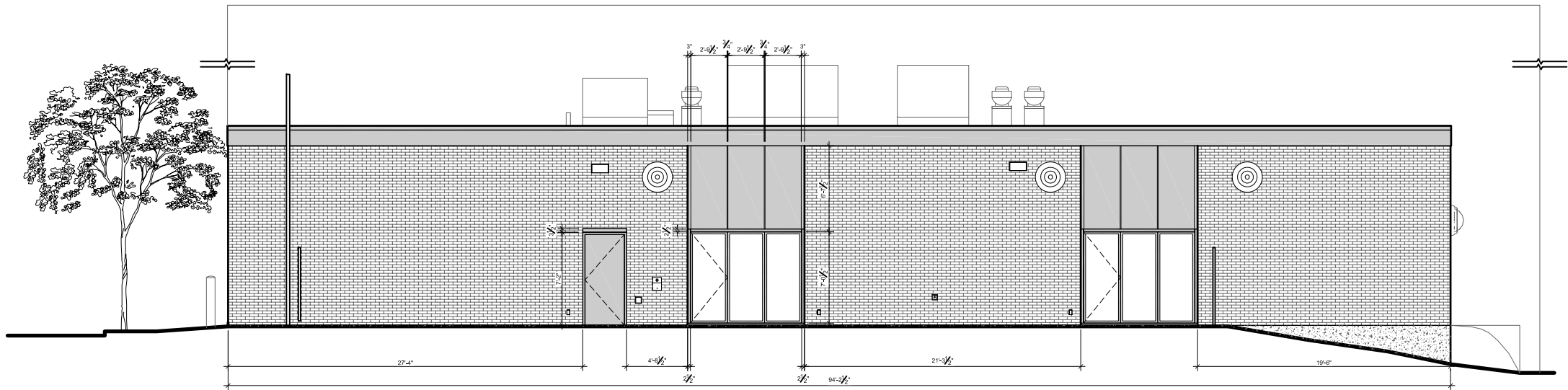




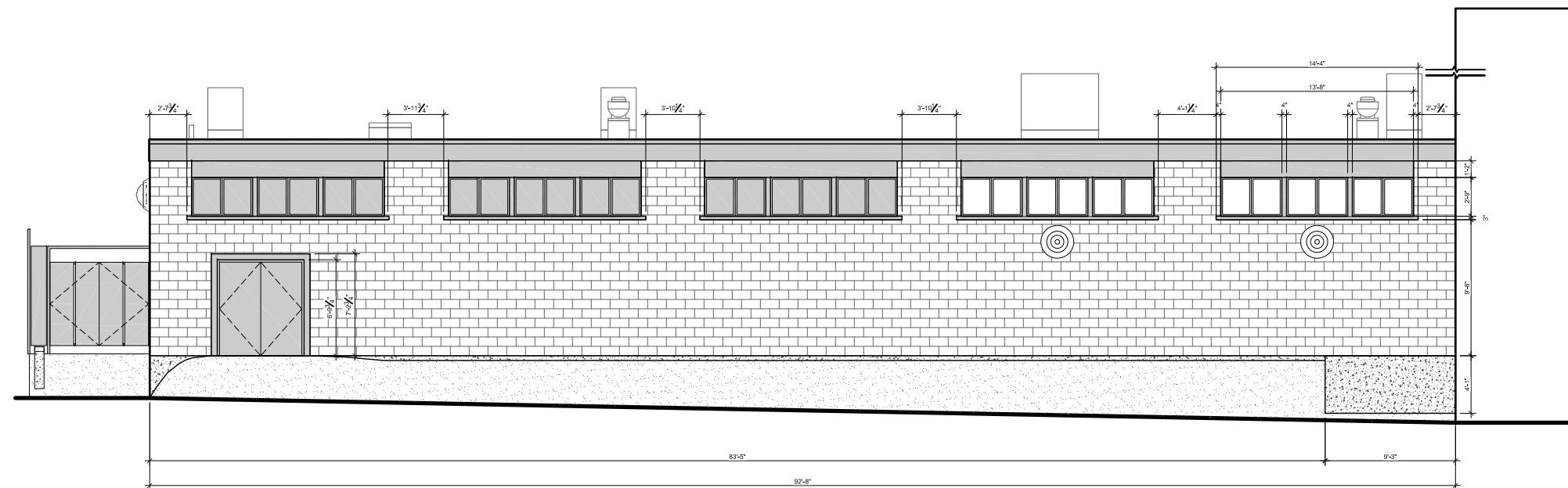
WEST ELEVATION
 FACADE OVERLOOKING ST-URBAIN STREET



SOUTH ELEVATION
 FACADE OVERLOOKING THE TERRACE



EAST ELEVATION
 FACADE OVERLOOKING THE BACK STREET





studio 3

total surface area of 750 sf. daylight studio
 dimensions: 33'5"w x 35'9"d x 13'10"h to wood ceiling / 12'5"h to beams / 10'9"h to ventilation duct
 west facing windows
 abundance of natural light
 opaque black curtains & light diffusing curtains
 blackout capable
 garage doors: 14'9"w x 12'h (ext.) / 7'11"w x 6'11"h (int.)

rates

photo – commercial ½ day: \$350
 photo – commercial 1 day: \$500
 photo – casting ½ day: \$300
 photo – editorial ½ day: \$300
 photo – editorial 1 day: \$400
 video – 1 day: \$650

notes

half-day: 4-hour block (8am to noon or 1pm to 5pm)
 full-day: 10-hour block (8am to 6pm)
 overtime photo: \$75/hour
 overtime video: \$100/hour



- ⚠ POWER: 300 AMP.
- x 15 amp.
- ⊗ 15 amp. / 12' from the ground
- y 20 amp.
- z 30 amp. / 220 v

